

# Type **TW17**

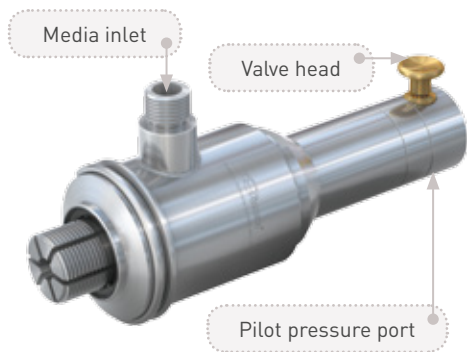
**WEH<sup>®</sup> Connector for pressure testing of gas cylinders**

with water



**General**

**DESCRIPTION**



**Features**

- Suitable for water pressure testing of gas cylinders
- Connection in seconds
- No hand tightening required
- Different actuations
- WEH® Jaw locking mechanism
- Robust construction
- High-grade materials

The type TW17 quick connector offers time saving on pressure testing of gas cylinders by eliminating tedious manual threading.

Depress the valve head and simply push the TW17 quick connector into the internal thread of the gas cylinder. Release the valve head and the pressure-tight connection is made. The cylinder can now be leak tested with water. The test procedure is regulated by an external control unit.

**Application**

Quick connector for pressure testing of gas cylinders with water.

**TECHNICAL DATA**

Characteristic	Basic version
Pressure range	PN = 280 bar   PS = 350 bar   PT = 525 bar
Pilot pressure	6 - 8 bar air
Temperature range	+5 °C up to +80 °C
Medium	Water
Actuation	Pneumatic actuation via valve head or manual actuation via lever handle
Material	Corrosion resistant stainless steel, brass
Sealing material	NBR
Registration	PED97/23/EC: CE0036

Other designs on request

**Example of use:**

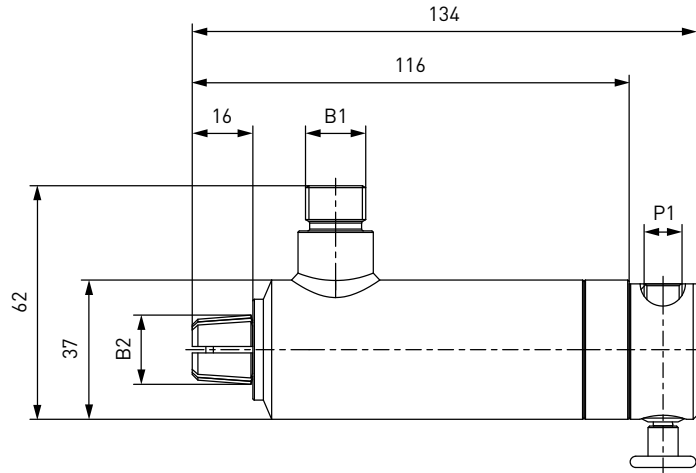


**Ordering**

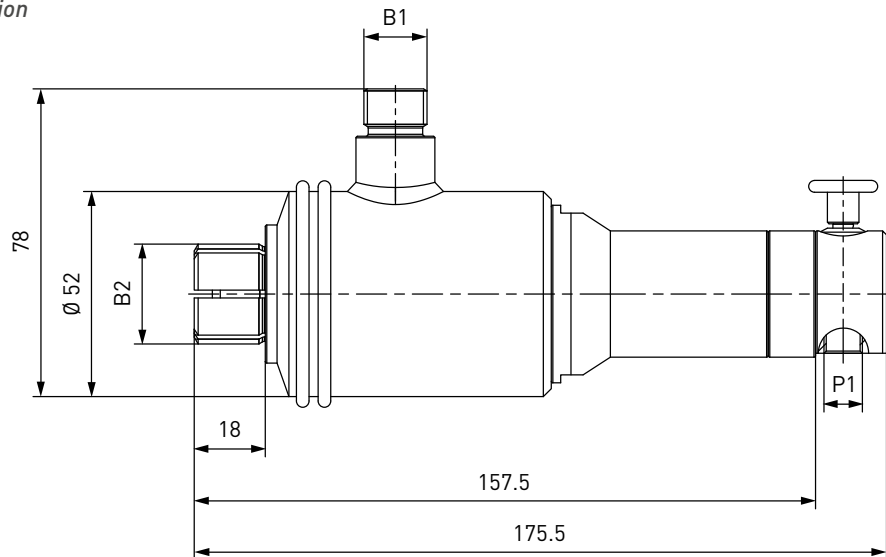
**ORDERING** | Quick connector TW17 with pneumatic actuation

approx. dimensions (mm)

*TW17V for W19,8x1/14" connection*



*TW17V for W28,8x1/14" connection*



Part No.	Description	Inlet B1 (external thread)	Connection B2 (external thread)	Pilot pressure port P1 (internal thread)
<b>C1-33210</b>	TW17V	M16x1.5*	W19.8x1/14"	G1/8"
<b>C1-30341</b>	TW17V	M16x1.5*	W28.8x1/14"	G1/8"

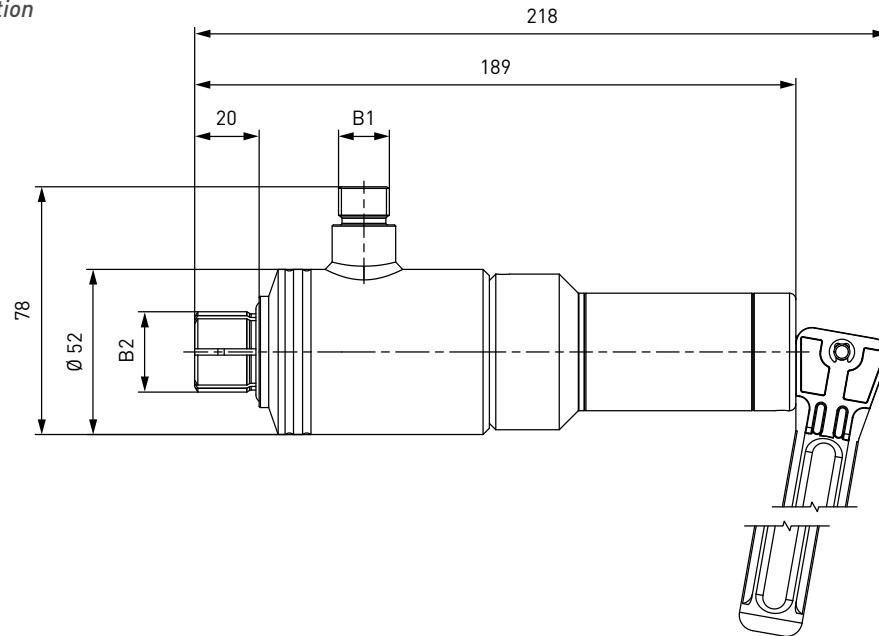
\* Ermeto 24° .S'

## Ordering / Accessories

### ORDERING | Quick connector TW17 with manual actuation

approx. dimensions (mm)

*TW17M for W28,8x1/14" connection*



Part No.	Description	Inlet B1 (external thread)	Connection B2 (external thread)
<b>C1-14854</b>	TW17M	M16x1.5*	W28.8x1/14"

\* Ermeto 24° .S'

Other connection sizes and versions on request.

## ACCESSORIES

The following accessories are available for type TW17:

### Actuations

For type TW17 various manual and pneumatic actuations are available:

- H (manually via hand lever)
- M (manually via lever handle)
- V (pneumatically via valve head)
- P (pneumatically for external control systems)

Please contact us!

### Spare parts

Various parts are available as spares for type TW17:

Part No.	Description
<b>E50-135N</b>	O-ring for C1-33210
<b>E50-231N</b>	O-ring for C1-30341 and C1-14854

## Other products

### OTHER PRODUCTS

You will find more products in our current catalogue No. 20



Further information on our homepage  
[www.weh.com](http://www.weh.com)

#### » Contacting

For queries and further information, please do not hesitate to contact us.

*Manufacturer:*

**WEH GmbH Precision Connectors**

Josef-Henle-Str. 1  
89257 Illertissen / Germany

Phone: +49 7303 9609-0

Fax: +49 7303 9609-9999

eMail: [sales@weh.com](mailto:sales@weh.com)

[www.weh.com](http://www.weh.com)