

# Type **TW19**

**WEH<sup>®</sup> Connector for pneumatic and oil-hydraulic pressure and function testing**  
of components with internal thread



General

**DESCRIPTION**



**Features**

- Connection in seconds
- No hand tightening required
- WEH® Jaw locking mechanism
- High-grade materials

The WEH® TW19 Quick connector is especially designed for sealing hydraulic components with internal thread in high and low pressure applications.

The clamping lever actuated connector safely grips into the test piece, even in case of high lateral forces, e.g. heavy or rigid hoses. The higher the test pressure the tighter the WEH® Connector will clamp itself into the thread of the test piece.

The front o-ring reliably seals the connection and no additional clamping devices are required.

Having only one seal in the interior of the connector, ease of maintenance is provided.

**Application**

Quick connector for pneumatic and oil-hydraulic pressure and function testing of components with internal thread, e.g. hydraulic aggregates.

**TECHNICAL DATA**

Characteristics	Basic version
Max. allowable operating pressure PS	Vacuum up to 350 bar
Temperature range	+5 °C up to +80 °C
Leak rate	$1 \times 10^{-3}$ mbar x l/s
Actuation	Manual actuation via clamping lever
Material	Corrosion resistant stainless steel
Sealing material	Front seal of NBR

Other designs on request

**Note:** Please contact us when using corrosive media or water!

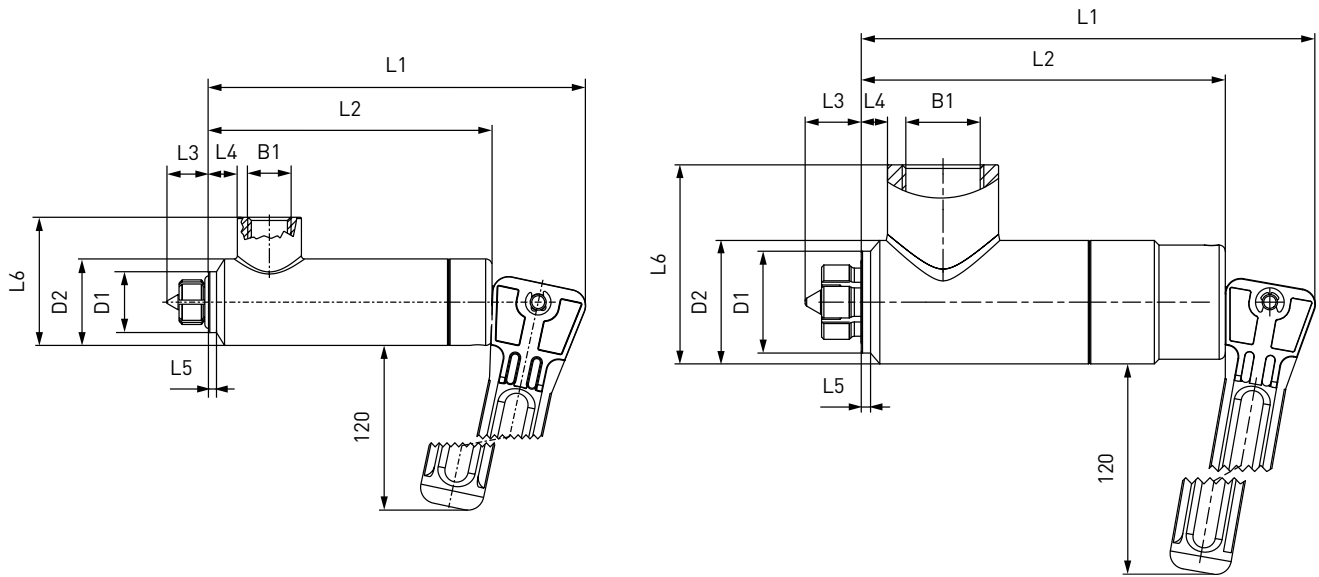
**Example of use:**



Ordering

**ORDERING** | WEH® TW19 Quick connector

approx. dimensions (mm)



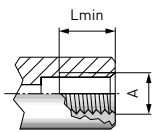
Body size 2 - 4

Body size 5 - 6

Body size	B1 (internal thread)	D1	D1*	D2	D2*	L1	L2	L3	L4	L5	L5*	L6
2	G1/4"	19.0	20.5	27.0	27.0	118.0	88.5	13.0	9.0	2.5	5.0	40.0
3	G3/8"	23.0	26.0	32.0	32.0	131.0	101.5	16.0	9.5	2.0	4.0	50.0
4	G1/2"	27.0	29.0	37.0	37.0	131.0	101.5	17.0	8.0	3.0	4.0	55.0
5	G3/4"	33.0	40.5	40.0	45.0	146.0	117.0	19.5	8.0	3.0	8.0	69.0
6	G1"	40.0	46.5	49.0	49.0	170.0	140.0	17.0	18.0	3.0	8.0	74.0

\* applies to SAE J1926

Metric ISO-thread to DIN 13 - acc. to DIN 3852 part 1, form X and Y

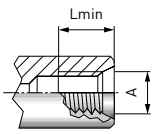


Part no.	Body size	Thread A (internal thread)	Lmin*
<b>C1-16484</b>	2	M12x1.5	9.5
<b>C1-16483</b>	2	M14x1.5	9.5
<b>C1-16590</b>	3	M16x1.5	10.5
<b>C1-16459</b>	3	M18x1.5	10.5
<b>C1-18404</b>	4	M20x1.5	10.5
<b>C1-16460</b>	4	M22x1.5	10.5
<b>C1-12860</b>	5	M24x1.5	11.0
<b>C1-17260</b>	5	M26x1.5	11.0

\* Lmin: minimum thread length  
Other connector sizes on request

Ordering

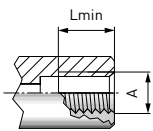
Metric ISO thread to DIN 13 - acc. to ISO 6149-1



Part no.	Body size	Thread A (internal thread)	Lmin*
<b>C1-35915</b>	2	M12x1.5	9.5
<b>C1-14940</b>	2	M14x1.5	9.5
<b>C1-48588</b>	3	M16x1.5	10.5
<b>C1-35916</b>	3	M18x1.5	10.5
<b>C1-119114</b>	4	M20x1.5	10.5
<b>C1-33703</b>	4	M22x1.5	10.5
<b>C1-41186</b>	5	M27x2.0	11.0

\* Lmin: minimum thread length  
Other connector sizes on request

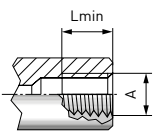
Whitworth tube thread to DIN EN ISO 228-1 - acc. to DIN 3852 part 2, form X and Y



Part no.	Body size	Thread A (internal thread)	Lmin*
<b>C1-16494</b>	2	G1/4"	9.5
<b>C1-16493</b>	3	G3/8"	10.5
<b>C1-16888</b>	4	G1/2"	10.5
<b>C1-15161</b>	5	G3/4"	11.0
<b>C1-18191</b>	6	G1"	12.5

\* Lmin: minimum thread length  
Other connector sizes on request

BSPT (tapered Whitworth tube thread) - acc. to DIN 3852 part 2, form X and Y

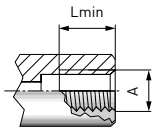


Part no.	Body size	Thread A (internal thread)	Lmin*
<b>C1-14544</b>	2	BSPT 1/4"	9.5
<b>C1-18648</b>	3	BSPT 3/8"	10.5
<b>C1-17275</b>	4	BSPT 1/2"	10.5
<b>C1-164842</b>	5	BSPT 3/4"	11.0
<b>C1-16180</b>	6	BSPT 1"	12.5

\* Lmin: minimum thread length  
Other connector sizes on request

Ordering / ass

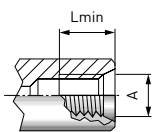
NPT thread (ANSI/ASME B1.20.1-1983) - acc. to SAE J476a



Part no.	Body size	Thread A (internal thread)	Lmin*
<b>C1-16565</b>	2	NPT 1/4"	9.5
<b>C1-44258</b>	3	NPT 3/8"	10.5
<b>C1-72165</b>	4	NPT 1/2"	10.5
<b>C1-164869</b>	5	NPT 3/4"	11.0
<b>C1-16874</b>	6	NPT 1"	12.5

\* Lmin: minimum thread length  
Other connector sizes on request

SAE-O-Ring Boss - acc. to SAE J1926 / ISO 11926



Part no.	Body size	Thread A (internal thread)	Lmin*
<b>C1-164843</b>	2	UNF 1/2"-20	9.5
<b>C1-16485</b>	2	UNF 9/16"-18	9.5
<b>C1-17618</b>	3	UNF 3/4"-16	10.5
<b>C1-18242</b>	4	UNF 7/8"-14	10.5
<b>C1-18394</b>	5	UN 1 1/16"-12	11.0
<b>C1-16461</b>	6	UN 1 5/16"-12	11.0

\* Lmin: minimum thread length  
Other connector sizes on request

Other connector versions on request.

Required information for ordering see page 7, catalogue no. 35.

**ACCESSORIES**

The following accessories are available for the WEH® TW19:

**Screw plug for plug version**

If the WEH® Connector is to be used as a plug, the media inlet 'B1' will be sealed with a screw plug of stainless steel (O-ring of NBR 70° Shore) for high pressure range. It is recommended that the media compatibility of the seal be tested by the customer!



Part no.	Description	Connection (external thread)	Pressure range
<b>W9330</b>	Screw plug (high pressure)	G1/4"	50 - 350 bar
<b>W9331</b>	Screw plug (high pressure)	G3/8"	50 - 350 bar
<b>W9332</b>	Screw plug (high pressure)	G1/2"	50 - 350 bar
<b>W9333</b>	Screw plug (high pressure)	G3/4"	50 - 350 bar
<b>W9334</b>	Screw plug (high pressure)	G1"	50 - 350 bar

## Other products

## OTHER PRODUCTS

You will find more products in our current catalogue no. 35



Further information on our homepage  
[www.weh.com](http://www.weh.com)

**Abbreviations/Definition**

Explanation of abbreviations see technical appendix in the catalogue or [www.weh.com](http://www.weh.com)

**Safe product selection**

Our WEH® Products are designed to be operated by qualified professional users (insofar as WEH® Products are also designed to be operated by other users in individual cases, this is explicitly stated in the corresponding operating instructions). You alone are responsible for the selection of WEH® Products and their configuration according to the requirements of your system. In doing so, please particularly consider your intended use, your performance data, your material compatibility, your system concept and your system limits as well as your technical and legal requirements for operation, handling and maintenance. The quality and safety of WEH® Products is our highest priority. For this reason, WEH® Products may not be used outside the specifications in the relevant data sheets and product descriptions. We also strongly recommend that you refrain from using third-party spare parts or a combination of WEH® Products with unsuitable third-party products. You alone are responsible for reviewing the suitability of third-party products. WEH® Products and WEH® Spare parts comply with our quality and safety standards.

**Explanation on the Pressure Equipment Directive**

These WEH® Products are generally and exclusively classified as pressure accessories for piping in accordance with Article 2 (5) of the Pressure Equipment Directive 2014/68/EU. These WEH® Products may not be used (i) as safety accessories or (ii) for vessels as defined by the Pressure Equipment Directive 2014/68/EU. Therefore, the application of these WEH® Products must comply with their classification as pressure accessories for piping. The assessment with regard to a different classification can, however, be made on request.

**External change management**

WEH reserves the right to update, optimise and adjust its products continuously. This may result in corresponding changes of the product. Customers will be informed proactively or unsolicited by WEH only in individual cases about product updates, product optimisations and/or product adaptations that have been carried out. You are free to contact WEH at any time to request information about any product updates, product optimisations and/or product adjustments.

© All rights reserved, WEH GmbH. Any unauthorized use is strictly forbidden. Subject to alteration.  
No liability will be assumed for any content. Herewith previous versions are no longer valid.

**» Contact**

For queries and further information, please do not hesitate to contact us.

Manufacturer:

**WEH GmbH Precision Connectors**

Josef-Henle-Str. 1  
89257 Illertissen / Germany

Phone: +49 7303 9609-0

Email: [sales@weh.com](mailto:sales@weh.com)

[www.weh.com](http://www.weh.com)