

# STAINLESS STEEL THREE-PIECE, ECONOMICAL, DIRECT-MOUNTING

**BV2 - 3FA - 1/4" - 4" BSP/NPT**

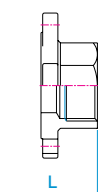
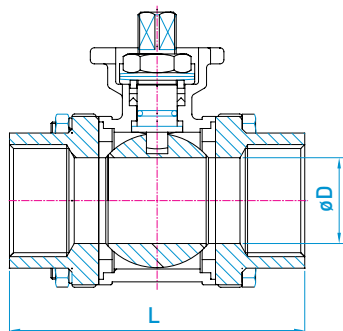
## FEATURES

- Blow-out proof stem
- Stainless steel ball and stem are standard
- Investment casting body and caps
- Easy installation with wide selection of end fittings
- Three-piece swing-out design allows in-line maintenance
- Full port from 1/4" to 4"
- Self-adjusting floating ball enables tight internal seal

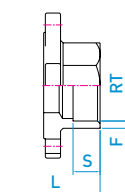


## DIMENSIONS (MM)

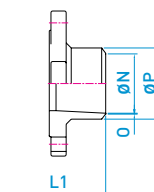
SIZE	ØD	F	L	L1	ØN	O	ØP	RT	S	ISO 5211
1/4"	11.60	3.60	60	70	11.60	1	18.00	14.20	11	F03/F04
3/8"	12.50	2.00	60	70	14.00	1	18.00	17.70	11	F03/F04
1/2"	15.00	2.00	69	69	17.00	1	22.70	21.90	12	F03/F04
3/4"	20.00	2.60	78	78	22.50	1	27.70	27.20	14	F03/F04
1"	25.00	3.20	84	84	26.00	1	33.50	33.90	14	F04/F05
1 1/4"	32.00	5.35	104	104	35.00	1	42.20	42.70	15	F04/F05
1 1/2"	38.00	5.70	118	119	41.50	1	48.80	48.80	17	F05/F07
2"	50.00	6.10	129	131	53.00	1	61.00	61.30	19	F05/F07
2 1/2"	65.00	7.15	185	190	69.40	1	78.00	74.00	21	F07/F10
3"	80.00	7.60	205	220	82.00	1	90.70	90.00	25	F07/F10
4"	100.00	7.85	230	269	103.00	1	115.80	115.60	30	F10



Threaded End



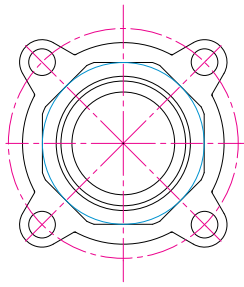
Socket Weld End



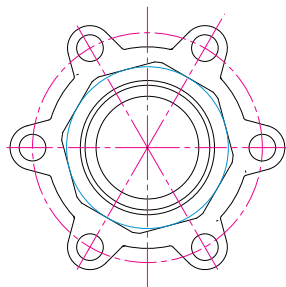
Butt Weld End

# STAINLESS STEEL

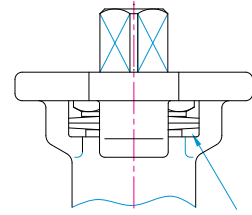
## THREE-PIECE, ECONOMICAL, DIRECT-MOUNTING



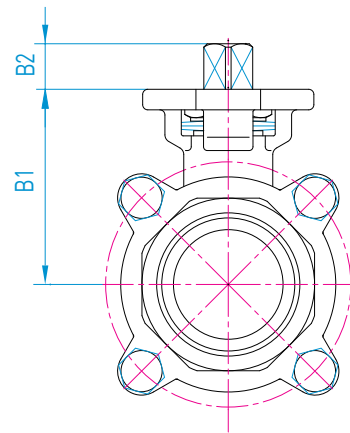
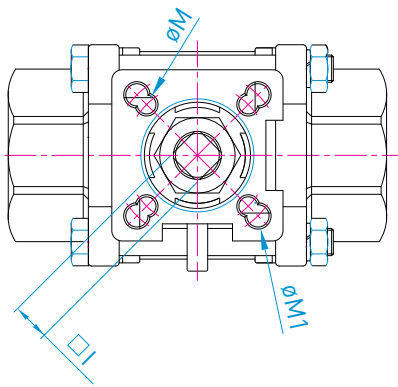
1/4"-2"



2 1/2"-4"



WINDOW



### DIMENSIONS (MM)

SIZE	B1	B2	ØM	ØM1	□
1/4"	40.20	9.00	5.50	5.50	19
3/8"	40.20	9.00	5.50	5.50	9
1/2"	40.20	9.00	5.50	5.50	9
3/4"	43.40	9.00	5.50	5.50	9
1"	52.00	11.00	5.50	6.50	11
1 1/4"	56.50	11.00	5.50	6.50	11
1 1/2"	65.70	15.50	6.50	8.50	14
2"	73.95	15.50	6.50	8.50	14
2 1/2"	93.00	16.50	9.00	11.00	17
3"	102.00	16.50	9.00	11.00	17
4"	132.00	21.50	-	11.00	22

### SPECIFICATIONS

