

# STAINLESS STEEL THREE-PIECE, HIGH-PERFORMANCE

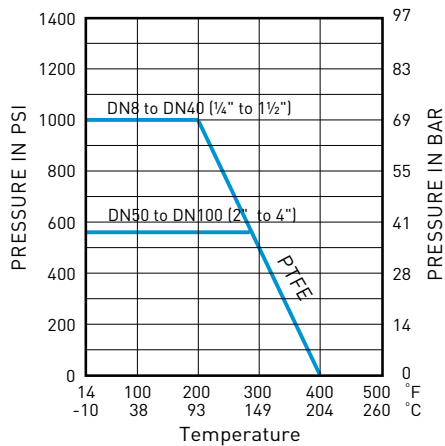
## BV2 – 3 F HIP – 1/4" - 4" BSP/NPT

### FEATURES

- Patented “Sealmaster” stem arrangement
- Double stem sealing complies with TA-LUFT requirements
- Three-piece swing out design
- ISO 5211 top mounting plate
- End connections flanged, screwed, butt weld or socket weld
- Carbon steel or stainless steel bodies
- Size range DN8 (1/4") to DN100 (4")
  - Full bore
- Seat material options
- Blow-out proof stem and anti-static design
- Tightness to EN12266-1

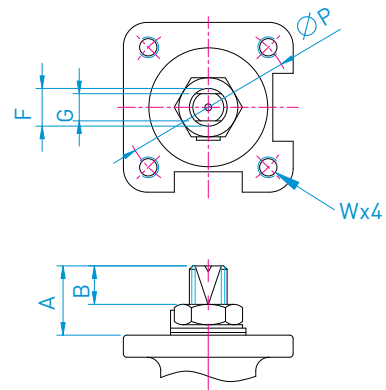


### PRESSURE/TEMPERATURE CHART

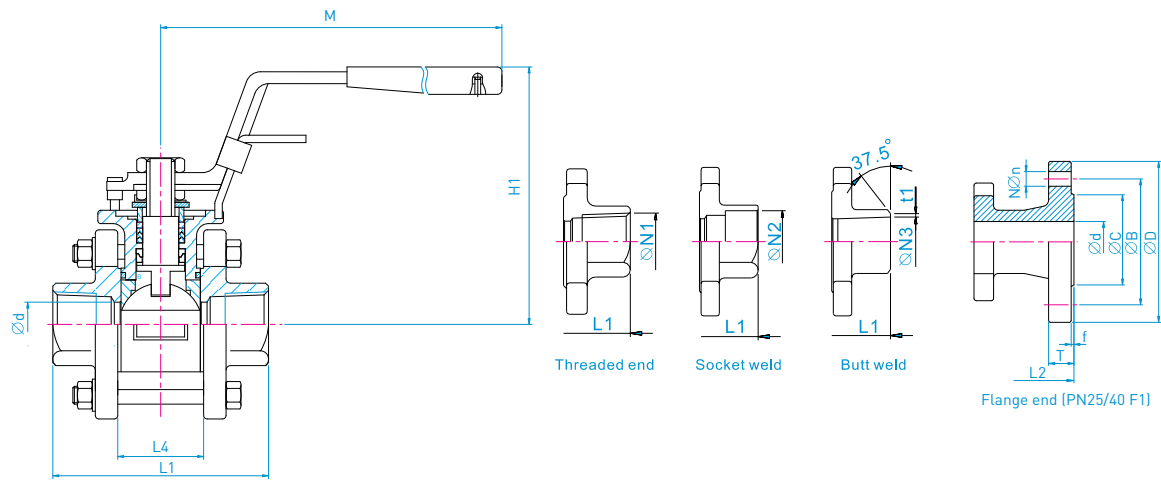


### DIMENSIONS (MM)

Size	DN	A	B	G	ØP	ØF	W	Wt (kg) threaded SW, BW	Wt (kg) PN25/40 F flange
1/4"	8	12.5	6.0	5.0	36	8.0	M5	0.44	N/A
3/8"	10	12.5	6.0	5.0	36	8.0	M5	0.44	N/A
1/2"	15	19.8	12.5	6.3	42	9.7	M5	0.44	2.24
3/4"	20	20.0	12.5	6.3	42	9.7	M5	0.95	3.04
1"	25	21.0	13.7	8.0	50	11.2	M6	1.40	3.90
1 1/4"	32	21.4	13.2	8.0	50	11.2	M6	1.90	6.25
1 1/2"	40	24.6	13.9	9.5	70	16.0	M8	3.08	7.15
2"	50	25.1	13.9	9.5	70	16.0	M8	4.70	10.15
2 1/2"	65	41.6	26.1	15.0	102	19.1	M10	8.90	16.62
3"	80	42.0	25.4	15.0	102	19.1	M10	14.10	23.80
4"	100	47.8	29.2	17.0	102	28.6	M10	22.00	35.60



# STAINLESS STEEL THREE-PIECE, HIGH-PERFORMANCE



## DIMENSIONS (MM)

Size	DN	Ød	M	H1	L4	L1	L2	N	t1	T	f	ØN	ØD	ØB	ØC	ØN1	ØN2	ØN3
1/4"	8	11.6	135	65.5	21.1	65.00	-	-	0.80	-	-	-	-	-	-	-	14.2	11.6
3/8"	10	12.7	135	66.0	21.2	65.00	-	-	0.65	-	-	-	-	-	-	NPT	17.5	12.8
1/2"	15	15.0	135	83.0	26.5	72.10	130	4	0.80	16	2	14	95	65	45	or	21.7	15.8
3/4"	20	20.0	135	86.0	33.2	85.00	150	4	1.00	18	2	14	105	75	58	BSPT	27.1	20.9
1"	25	25.0	165	96.0	37.7	91.96	160	4	1.60	18	2	14	115	85	68	or	33.8	26.6
1 1/4"	32	32.0	165	102.0	46.8	110.00	180	4	1.60	18	2	18	140	100	78	BSPP	42.6	35.0
1 1/2"	40	38.0	200	115.0	58.0	123.00	200	4	1.65	18	3	18	150	110	88	or	48.6	40.9
2"	50	50.8	200	124.0	69.6	142.00	230	4	1.60	20	3	18	165	125	102	DIN	61.1	52.5
2 1/2"	65	65.0	250	160.0	86.5	174.00	290	8	2.00	22	3	18	185	145	122	2999	77.1	62.7
3"	80	76.0	250	170.0	102.6	193.00	310	8	2.00	24	3	18	200	160	138		90.2	78.0
4"	100	97.4	500	182.0	125.4	221.40	350	8	2.00	24	3	22	235	190	162		115.1	105.5