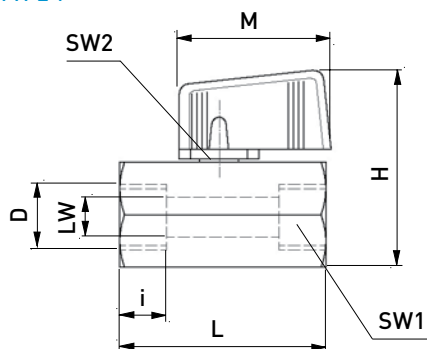


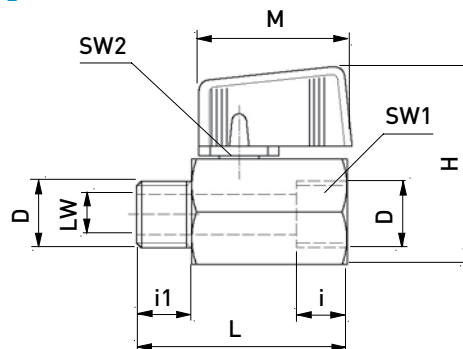
# BRASS MINI BALL VALVE

## BV1 - 1 M - 1/8" - 3/4" BSP - T1-2

TYPE 1



TYPE 2



### FEATURES

- Body from hexagon extruded brass profile, sandplasted
- Female thread/male thread acc. To DIN ISO 228
- Blow out proof stem design with O-ring
- Maintenance free
- Operation with handle or fork wrench

### WORKING TEMPERATURE

-20°C to +90°C (depending on working pressure)

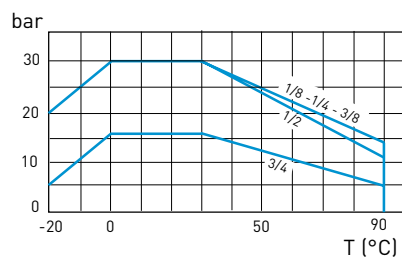
### SUITABLE FOR

Compressed air, water, fuels acc.

### MATERIALS

- Body: brass chrome plated
- Ball: brass chrome plated
- Ball seal: PTFE
- Stem: brass
- Stem seal: O-ring from:
  - 1/8 - 1/2 = Viton
  - 3/4 = NBR
- Handle: nylon, black

### PRESSURE TEMPERATURE DIAGRAM



### DIMENSIONS (MM)

DN	LW	PN bar	D DIN ISO 228	i	i1	L	SW 1 Hexagon	SW 2 2-flat	M	H	Weight (g)	
											Type 1	Type 2
4	8	30	G 1/8	10	10	41.5	21	5	30	39	112	90
6	8	30	G 1/4	10.5	11	41.5	21	5	30	39	100	82
10	8	30	G 3/8	10.5	11	41.5	21	5	30	39	88	80
15	10	30	G 1/2	12	13	49	25	5	30	43	136	126
20	12	16	G 3/4	14	13.5	54	30	5	30	47.5	194	178

i = useable length of thread